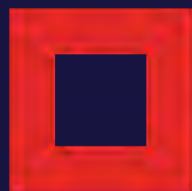


# An Interactive Study Guide



COLORADO SPRINGS

Fine Arts Center

at COLORADO COLLEGE



# The Plot



is what happens in a story, from beginning to end.



1

Paloma is a young prairie dog who lives on the prairie, in an area called El Llano de la Soledad or The Lonely Plain.

2

She is curious about the world and wants to see the city. One day, she decides to leave the prairie and go to Mexico City to visit her cousin, Arturo.

3

In the city, Paloma meets a friendly city dog named Sushi. Sushi shows Paloma around the city and they become friends.

4

Meanwhile, back on the prairie, a human named Teodora is planning to build a golf course. This will destroy the prairie dog's home.

5

Together, Paloma and Sushi rally the prairie dogs and the audience to stop Teodora. They are successful, and the prairie is saved.

6

Paloma learns about Teodora's plan and decides to go back to the prairie to help save her home. Sushi goes with her.

7

Sushi decides to stay on the prairie with Paloma, and they all live happily ever after.



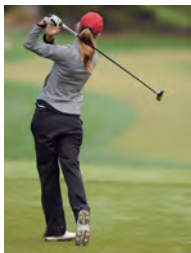
# Characters

are the people and creatures in the story.

Can you find clues in the character descriptions that match the pictures below?

- 1 Paloma:** A young prairie dog who is curious about the world and wants to see the city.
- 2 Mom:** Paloma's mother. She warns Paloma about the dangers of the city.
- 3 Benito:** A burrowing owl who is a bit annoying. He depends on prairie dogs to dig burrows for him.
- 4 Sushi:** A friendly city dog who becomes friends with Paloma. He is brave and helps Paloma.
- 5 Arturo:** Paloma's cousin who lives in the city. He is very cool and fashionable squirrel.
- 6 Teodora:** A human who wants to build a golf course on the prairie. She is the villain of the story.
- 7 Gecko:** A friendly gecko who helps Paloma find her way around the city.
- 8 Simón:** Teodora's personal assistant. She tries to reason with her boss, but Teodora won't listen.
- 9 Sous Chef:** Sushi's human friend who works at a restaurant.
- 10 Owl Expert:** A scientist who studies owls.
- 11 Prairie Dog Expert:** A scientist who studies prairie dogs.

Write the number of the character below the picture that matches the character.



# The Setting

The setting is the location of where the story takes place.



## The plains- in Nuevo León:

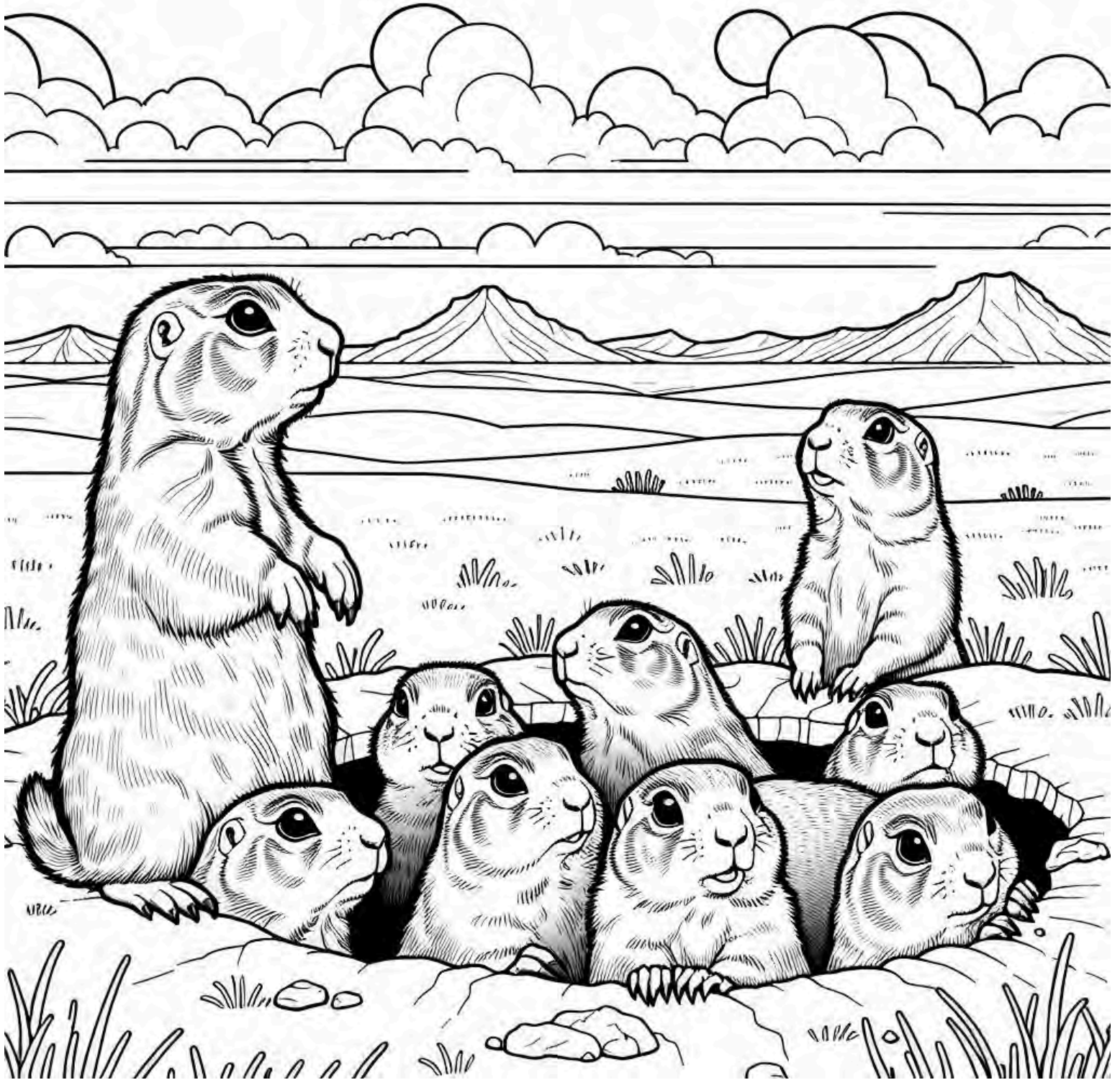
The first setting is on the plains, or llano, which is a big, flat area of land covered in grass. The llano is in the countryside, also called a rural area. **Rural** means there are not many people or buildings around. This is where Paloma, the prairie dog, lives with her family and friends.

## Mexico City:

The second setting is Mexico City, the capital of Mexico. Mexico City is a big city, also called an urban area. **Urban** means there are lots of people, cars, and buildings in this area. This is where Paloma's cousin, Arturo, lives in a jacaranda tree.

# EL LLANO DE LA SOLEDAD

The Lonesome Plains



The prairie is a large, flat grassland. It is a natural protected area, which means no one is allowed to build or farm there. The prairie is home to many animals, including prairie dogs, owls, and snakes.



# Mexico City

Mexico City is the capital of Mexico. It is a very large and busy city, with millions of people.

The city is a busy and exciting place. There are many people, cars, and buildings. The city is also home to many animals, including dogs, squirrels, and geckos.

**Templo de Tenochtlán:** This is an ancient Aztec temple in Mexico City.



## El Centro:

This is the downtown area of Mexico City.

**El Ángel de la Independencia** is a big statue of a golden angel that reminds people in Mexico City of their freedom.





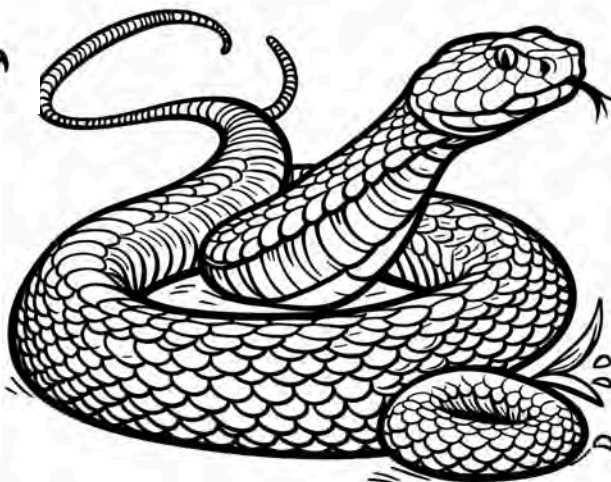
# Keystone Species



A keystone species is a species that has a big impact on its ecosystem. This means that if the keystone species is removed, the ecosystem would change drastically.



Color all the pictures that depend on the Prairie dog.



# El Llano de la Soledad Vocabulary Search



F C R X S B T X O J M Y X R Z E H N R P  
 A R O Z T L R L M U A P L A I N S V C R  
 J L M L G T A W Q E D C H P Z D H S A A  
 N Y V P O Y M D E P R E D A D O R E S I  
 N C W U U N A V N L I F B I G H P T C R  
 M N A P Z R Y O G K G J D I D N R T A I  
 C X B C Z E H M Y X U I H F H L E I B E  
 O O E U H B I E N V E N I D O S D N E D  
 A Z L S R A V U T R R C I B L T A G L O  
 W O Q O O R R K L C A V X T L O T H Q G  
 S R I E N L O A Y O S S Z E A T O G P L  
 D U F Z C I E W C A N H R C N F R I E J  
 O R Z K D O A D A T Y E G O O G P N R A  
 R A T T L E S N A K E Y S L P F L A S C  
 H L L M H S R Y P D N R U O B B O R O A  
 U H W H S S H M S N W F S T M M T D N R  
 R Z C V V K S Q Y T F Z M E D E S I A A  
 B E S C E N A R I O E F Y L U T O L J N  
 A F T F H G Q D C R I M X R B H W L E D  
 N N I O F S Q U I R R E L C N L L A S A



Rattlesnake

Characters

Lonesome

Depredador

Colonia

tecolote

Burrow

Ardilla

Urban

Madrigueras

Jacaranda

Personajes

Squirrel

Escenario

Soledad

Plains

Prairie Dog

Trama

Bienvenidos

Ecosystem

Predator

cascabel

Setting

Colony

Llano

Rural

Plot

owl

